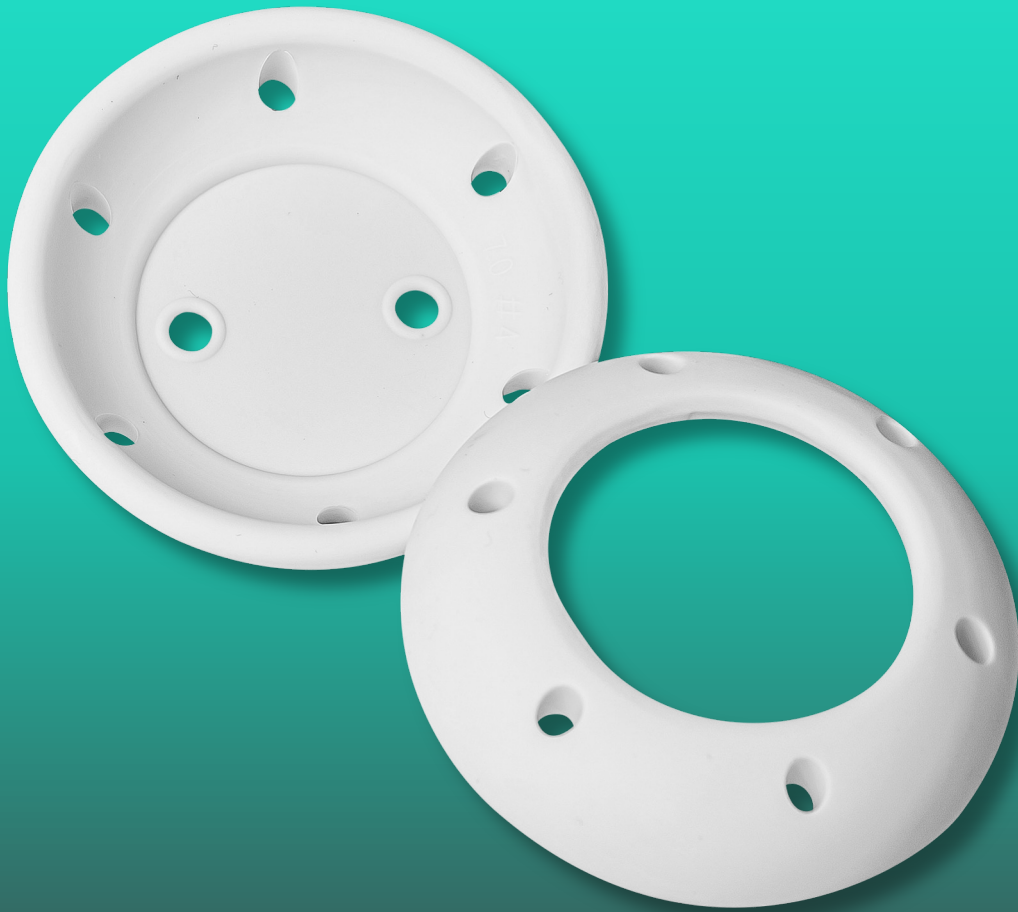




Pessary — Dish without Knob

Datasheets





Descriptions

The Dish Without Knob Pessary is a flat, round pessary with a concave shape, designed to provide support for pelvic organ prolapse (POP), while being relatively easy to insert and remove. Unlike a dish pessary with a knob (which provides additional urethral support for incontinence), this version lacks a central knob, making it more suitable for managing prolapse without significantly affecting urinary function. It is made of medical-grade silicone, ensuring flexibility, durability, and comfort for long-term use.

Specifications

Part Number	Fitting Set	#0		#1		#2		#3		#4		#5		Feature
		Inch	mm	Inch	mm	Inch	mm	Inch	mm	Inch	mm	Inch	mm	
PCP	None	2.00	50	2.15	55	2.35	60	2.55	65	2.75	70	2.95	75	
PCPS	Available	2.00	50	2.15	55	2.35	60	2.55	65	2.75	70	2.95	75	With Support
Part Number	Fitting Set	#6		#7		#8		#9		#10		Feature		
		Inch	mm	Inch	mm	Inch	mm	Inch	mm	Inch	mm			
PCP	None	3.15	80	3.35	85	-	-	-	-	-	-			
PCPS	Available	3.15	80	3.35	85	-	-	-	-	-	-		With Support	

Packing

Part Number	Dimensions (mm)			Quantity			Weight / Carton (kg)	
	Pouch	Box	Carton	Q'ty / Box	Box / Carton	Q'ty / Carton	Net	Gross
PCP00B1	120x316x18	180x130x165	369x352x411	10	12	120	1.62	5.40
PCP01B1	120x316x18	180x130x165	369x352x411	10	12	120	1.80	5.58
PCP02B1	120x316x18	180x130x165	369x352x411	10	12	120	2.04	5.82
PCP03B1	120x316x18	180x130x165	369x352x411	10	12	120	2.52	6.30
PCP04B1	120x316x18	180x130x165	369x352x411	10	12	120	2.76	6.54
PCP05B1	120x316x18	180x130x165	369x352x411	10	12	120	3.00	6.78
PCP06B1	120x316x18	180x130x165	369x352x411	10	12	120	3.42	7.48
PCP07B1	120x316x18	180x130x165	369x352x411	10	12	120	3.72	7.78
PCPS00B1	120x316x18	180x130x165	369x352x411	10	12	120	1.74	5.52
PCPS01B1	120x316x18	180x130x165	369x352x411	10	12	120	1.92	5.70
PCPS02B1	120x316x18	180x130x165	369x352x411	10	12	120	2.28	6.06
PCPS03B1	120x316x18	180x130x165	369x352x411	10	12	120	2.64	6.42
PCPS04B1	120x316x18	180x130x165	369x352x411	10	12	120	2.88	6.66
PCPS05B1	120x316x18	180x130x165	369x352x411	10	12	120	3.24	7.02
PCPS06B1	120x316x18	180x130x165	369x352x411	10	12	120	3.68	7.74
PCPS07B1	120x316x18	180x130x165	369x352x411	10	12	120	3.96	8.02

Applications

This pessary is primarily used to manage:

- Pelvic Organ Prolapse (POP)** : Provides support for moderate to severe prolapse, including uterine prolapse, cystocele (bladder prolapse), and rectocele (rectal prolapse).
- Alternative to Surgery** : Recommended for patients who cannot or do not wish to undergo surgical intervention for prolapse.
- Post-Surgical Support** : Helps maintain vaginal and pelvic support following prolapse repair surgery.

Precautions:

- Proper Fitting is Essential** : The pessary must be fitted by a healthcare provider to ensure it provides adequate support without causing discomfort.
- Regular Cleaning and Maintenance** : Patients should be instructed on how to remove, clean, and reinsert the pessary (typically weekly or as advised by a doctor). If self-care is not possible, periodic medical check-ups are necessary.
- Monitor for Vaginal Irritation or Infection** : Symptoms such as increased discharge, bad odor, bleeding, or discomfort may indicate an infection, ulceration, or improper fit.
- Avoid Prolonged Use Without Supervision:** Long-term use without removal and cleaning can lead to vaginal tissue erosion, infections, or pressure ulcers.
- Assess for Allergic Reactions** : While rare, some individuals may have sensitivities to silicone or other materials used in the pessary.
- Not Ideal for Severe Urinary Incontinence:** Since this pessary does not have a knob, it does not provide additional urethral support and may not be the best option for patients with significant stress urinary incontinence (SUI).

FDA 510(k) K031463



LI Medical Corporation

2F, No. 43, Zhongxing Road, Xizhi District,
New Taipei City 221012, Taiwan
Tel : +886-2-8646-1999
Fax : +886-2-2647-1999

Representative / Distributor