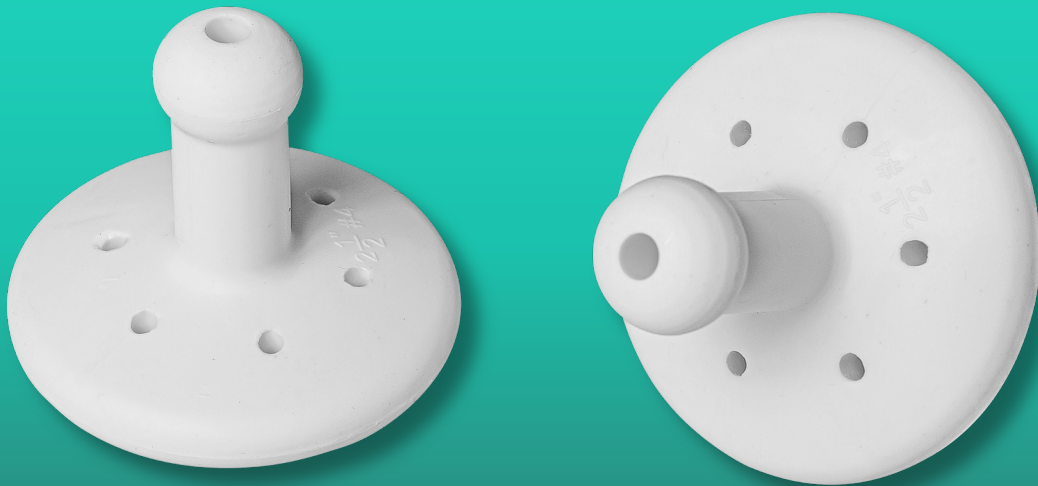




Pessary — Gellhorn

Datasheets





Descriptions

A **Gellhorn pessary** is a firm, silicone medical device designed to manage more advanced cases of pelvic organ prolapse (POP). It consists of a round, concave disc with a short stem in the center. The disc provides support by resting against the vaginal walls, while the stem aids in removal.

Unlike ring or donut pessaries, the Gellhorn pessary is typically used for more severe prolapse cases and is less flexible. It is often preferred for patients who require significant pelvic support but do not want or cannot undergo surgery.

Specifications

Part Number	Fitting Set	#0		#1		#2		#3		#4		#5		Feature
		Inch	mm	Inch	mm	Inch	mm	Inch	mm	Inch	mm	Inch	mm	
PGL	Available	1.50	38	1.75	44	2.00	51	2.25	57	2.50	64	2.75	70	With Drain
Part Number	Fitting Set	#6		#7		#8		#9		#10				Feature
		Inch	mm	Inch	mm	Inch	mm	Inch	mm	Inch	mm	Inch	mm	
PGL	Available	3.00	76	3.25	83	3.50	89	3.75	95	4.00	102			With Drain

Packing

Part Number	Dimensions (mm)			Quantity			Weight / Carton (kg)	
	Pouch	Box	Carton	Q'ty / Box	Box / Carton	Q'ty / Carton	Net	Gross
PGL00B1	120x316x54	180x130x165	369x352x411	10	12	120	2.52	6.30
PGL01B1	120x316x54	180x130x165	369x352x411	10	12	120	3.00	6.78
PGL02B1	120x316x54	180x130x165	369x352x411	20	6	120	3.60	7.15
PGL03B1	120x316x54	180x130x165	369x352x411	20	6	120	4.56	8.11
PGL04B1	120x316x54	180x130x165	369x352x411	20	6	120	5.40	8.95
PGL05B1	120x316x54	180x130x165	369x352x411	20	6	120	6.16	9.71
PGL06B1	120x356x54	180x130x165	369x352x411	20	6	120	6.96	10.79
PGL07B1	120x356x54	180x130x165	369x352x411	20	6	120	8.04	11.87
PGL08B1	120x356x54	180x130x165	369x352x411	20	6	120	9.12	12.95
PGL09B1	120x356x54	180x130x165	369x352x411	20	6	120	10.44	14.27
PGL10B1	120x356x54	180x130x165	369x352x411	20	6	120	11.64	15.47

Applications

- Moderate to Severe Pelvic Organ Prolapse (POP):** Supports uterine prolapse, cystocele (bladder prolapse), and rectocele (rectal prolapse).
- Patients Unable to Self-Manage Pessaries** : Since the Gellhorn pessary is more rigid and difficult to insert and remove, it is typically managed by a healthcare provider rather than the patient.
- Non-Surgical Alternative to POP Repair Surgery** : Ideal for individuals who are not surgical candidates due to age, health conditions, or personal preference.

Precautions

- Requires Professional Insertion and Removal** : Due to its structure, most patients cannot remove or reinsert a Gellhorn pessary on their own. It must be managed by a doctor or nurse.
- Regular Medical Follow-Ups** : To prevent complications, healthcare providers should remove, clean, and assess the pessary every 4 to 12 weeks.
- Risk of Vaginal Irritation and Ulcers** : Prolonged use without proper care can cause vaginal tissue erosion, irritation, or pressure sores.
- Not Recommended for Patients with Severe Vaginal Atrophy** : Postmenopausal women with thinning vaginal tissue may need vaginal estrogen therapy to reduce irritation.
- Possible Urinary or Bowel Issues** : In some cases, the pessary may put pressure on the urethra or rectum, causing difficulty urinating or defecating. Adjustments may be needed.

FDA 510(k) K031463



LI Medical Corporation

2F, No. 43, Zhongxing Road, Xizhi District,
New Taipei City 221012, Taiwan
Tel : +886-2-8646-1999
Fax : +886-2-2647-1999

Representative / Distributor